



# Uniform Policy

THE BEST FROM EVERYONE, ALL OF THE TIME

REVIEWED MAY 23

Our uniform bears our logo, which represents our core values. Our uniform should be worn with pride. Students are expected to adhere to the uniform rules and present themselves smartly every day as they would in the world of work.

## SHOES

- Black only.
- Shoes must be of a solid, robust and traditional style. Shoes that look like trainer and sport branded shoes are not permitted.

Any student who attends school in the incorrect footwear will be offered school shoes. Only students with medical reasons will be permitted to wear alternative footwear.

The following are examples of shoes the school deems unacceptable.



## JEWELLERY & PIERCINGS

A watch for telling the time. No large earrings, glass studs or stretchers.

Ear and nose piercing are permitted provided that they are stud only and removed during PE. Septum pricings are not permitted.

Only one plain stud per ear lobe is permitted for pupils with pierced ears.

If your child is going to have their ears pierced please ensure this takes place at the beginning of the six week holiday so that pupils are able to remove earrings if requested without still undergoing the "settling in" period.

**Uniform suppliers:**

*Monkhouse, Shirley  
Clive Mark, Kings Heath*

*Concept Schoolwear, Hall Green  
Midland Schoolwear, Acocks Green*

### MAKE-UP, NAIL VARNISH & FALSE EYE LASHES

Make-up is inappropriate with school uniform and should not be worn.

No nail varnish or false nails to be worn.

False eyes lashes are unacceptable due to Health & Safety concerns.

### HAIRCUTS & ACCESSORIES

Conventional hairstyle/colour.

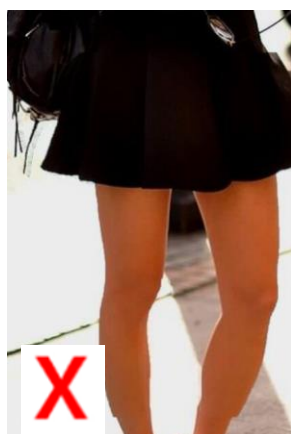
No coloured hair/stripes shaved in.

Hair accessories must be functional, small and black.



### LIGHT HALL UNIFORM (BOYS & GIRLS)

- Black Blazer with Badge
- Black Trousers (conventional width – no tight fitting trousers)
- Black Pleated School Skirt (supplied by approved stockist) with pre-embroidered tree on the hemline. The hemline must be on the knee; or
- Black Straight Skirt supplied by approved stockist with pre-embroidered tree on the hemline; or
- Black straight skirt can be purchased from any high street store and a badge purchased from school to be sewn onto the hemline (front left). This hemline must be on the knee. The skirt fabric must not be stretch, tube, knitted, leather or faux leather
- Black Socks/Tights. We recommend that tights are worn with skirts.
- White Collared Shirt
- School House Tie – Clip-on (Lower school tie years 7-9 & Upper school tie years 10-11)
- Black formal shoes (no pumps or trainer style)
- Plain black V neck sweater (to ensure that tie can be seen). No hoodies, sweatshirts or logos.
- Appropriate outdoor coat (no denim, no logos, no hoodies, no sportswear, no leather)
- Headscarves to be plain black only



Skirt should be no more than 5 cm above the top of knee



No lycra/tube skirts



No leggings



No skinny or cropped trousers

## SPORTSWEAR (BOYS & GIRLS)

- Light Hall Polo Shirt with Light Hall Badge
- Black Shorts with Light Hall Badge or Light Hall Skort
- Universal Sports Top with Light Hall Badge
- Shin Pads
- Black Football Socks
- Trainers
- Gum Shield (advisable for hockey and rugby)
- Football Boots (required for football or rugby)

## OPTIONAL

- School Base Layer to be worn under Light Hall Polo Shirt, shorts or skort – black
- School Track Suit bottoms - from approved supplier with logo. Strictly no leggings or coloured tracksuit bottoms.