

ARRANGEMENTS FOR SYMPTOMS **BEFORE** 20th DECEMBER

MY CHILD IS ILL CHRISTMAS HOLIDAYS SYMPTOMS THAT APPEAR **BEFORE** 1.00PM ON SUNDAY 20TH DECEMBER (or within 48 hours of last being in school)

Do they have Covid 19 symptoms?

Covid 19 symptoms:

- High temperature
- New persistent cough
- Loss of taste or smell

YES

If these symptoms start before or up to 1pm on Sunday 20th December (or within 48 hours of last being in school)

Your child needs a test –
INFORM Light Hall on attendance@lighthall.co.uk that your child is ill. Please state symptoms and start date of symptoms

Your child and everyone in the household must **self isolate** until result comes back

NO
No action

Test results

Positive

- **Inform Light Hall immediately by email. (attendance@lighthall.co.uk)** Please state the names of close contacts at break and lunchtimes, mode of transport to and from school, and anyone your child has travelled with, during the last 48 hours that your child was at school..
- Your child must **self isolate** for **10 days** from 1st day of symptoms.
- Everyone else in your household must **self isolate** for **10 days** from 1st day of symptoms.

Negative

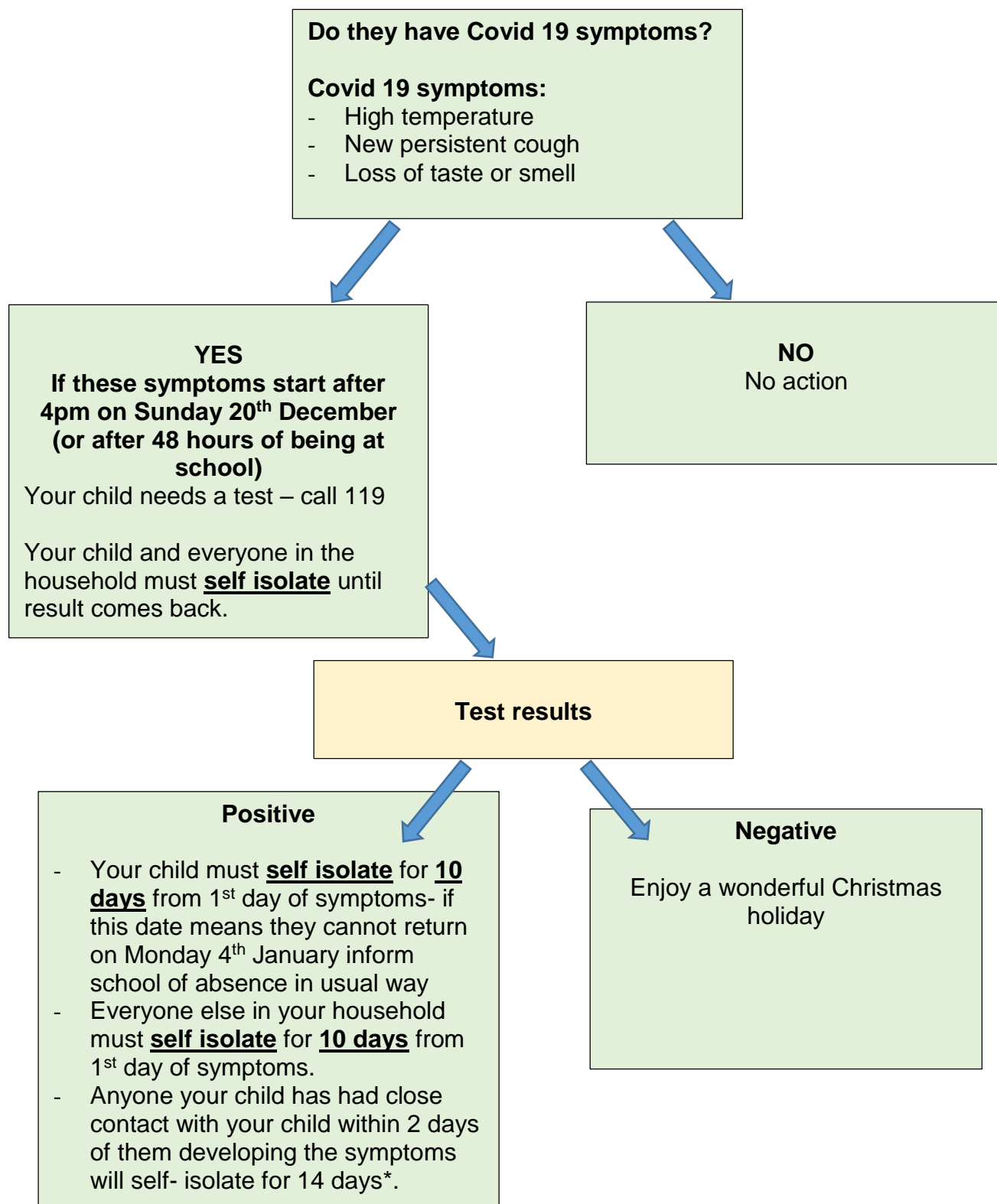
Inform Light Hall immediately by email:
attendance@lighthall.co.uk

Self isolate – this means that you must not leave your house other than to go to take a test if you need to have one. If the whole household is isolating, then you need to arrange for food deliveries etc. as you cannot go out to the shops. You cannot go to the park, to visit other people and other people cannot visit you. **You must stay at home to prevent the spread of the virus.**

ARRANGEMENTS FOR SYMPTOMS **AFTER** 20th DECEMBER

MY CHILD IS ILL CHRISTMAS HOLIDAYS

SYMPTOMS THAT APPEAR AFTER 1PM ON SUNDAY 20TH DECEMBER (or after 48 hours from being at school) AND BEFORE RETURN TO SCHOOL ON 4TH JANUARY



Self isolate – this means that you must not leave your house other than to go to take a test if you need to have one. If the whole household is isolating, then you need to arrange for food deliveries etc. as you cannot go out to the shops. You cannot go to the park, to visit other people and other people cannot visit you. **You must stay at home to prevent the spread of the virus.**