



# The Word

THE BEST FROM EVERYONE, ALL OF THE TIME

2<sup>ND</sup> APRIL 2021

## Headteacher's Roundup

Well done to everyone – we made it to the end of a very strange term. Our students have emerged from a period of lockdown and re-adapted to school and routine so well. I could not be prouder of them all.

Year 11 have completed their first round of assessments this week. I can only commend them for their attendance and attitude this week. They have shown true resilience in their learning. I even heard students quizzing each other as they walked up the drive this week!

As it is the end of term, we are busy distributing subject and house braids to the students to acknowledge their achievements. Nearly 80% of all students will be receiving some form of recognition. The huge amount of certificates and badges really gives a perspective of how hard they have been working, both at school and during remote learning.

Finally, I visited some year 10 PSHEC lessons on Wednesday. They were

really thought provoking. Our young people were enjoying it, discussing the future world and how to solve some of the problems.

As this term draws to a close we say a fond farewell to Miss Baxter, who is relocating with her partner to the south west of England and Mrs Read who is relocating to Wales. We thank them for all their hard work at Light Hall and wish them all the very best for the future. We say au revoir to Mrs Shabir who commences her maternity leave today. We wish her well and look forward to hearing the good news of the new arrival.

In April we welcome Miss Darby to Science, Mrs Nijjar to RE, Miss Povey as Head of English, Miss Welsh to English and Mr Card as Head of Maths.

Do enjoy the break and I look forward to seeing all our students again on 19<sup>th</sup> April.

*Annette Kramblin*



## Word of the Week

### UPHOLD

Verb: To show that you support something such as an idea by what you say or do.

We **uphold** British values by respecting the values, ideas and beliefs of others whilst not imposing on our own on others.

## House Points Totals

The running totals for number of house points so far are:

			
<b>22366</b>	<b>22995</b>	<b>23210</b>	<b>23537</b>

1<sup>st</sup> April 2021



Dear Parents and Carers,

This academic year continues to be a challenge. I am sure that many families have had challenging times and there is no doubt that children have missed out significantly during this pandemic. At Light Hall School we have tried really hard to put our children's education and well-being at the centre of everything we do. This was recognised in the recent one-day visit from Ofsted. I know that Mrs Kimblin has shared with you the report we received after that inspection. I would like to refer to some of the many changes that we have made to help us to achieve those positive statements.

Firstly, we have reviewed each subject area's curriculum. We have identified effective routes through the learning and the underpinning vital knowledge required. In addition, we have appointed Lead Practitioners in the key areas of English, maths and science. These additional skills teachers are developing materials, approaches, and the teaching of other staff to ensure the teaching is of the best standard. This has made us slightly overstaffed which has also meant that the need for supply teachers has significantly decreased (particularly in science). We feel that over the past 4 years we have addressed the concerns raised about the use of supply teachers, at the time of the last full Ofsted report, in November 2017.

As Governors we have responded to the criticism of our practice by carrying out a review of governance. We have undertaken training and changed the structure of the Governing Board's meetings. I was particularly pleased to see this recognised in the recent mini-inspection.

Lastly, I wish to talk about particular strengths of the school. Firstly, we do our very best to be inclusive and to support every child as an individual. We provide quality support both for SEND students and for students who are going through a bad time. The Edmund Hilary Suite and Refocus Centre are significant assets to the school. Secondly, we take progression seriously, helping students to prepare for life after Light Hall. The whole-child approach makes us proud to be associated with Light Hall School. We are a community that lives by respecting each other, and where that fails, we address the issues. "Your family is our family".

My very best wishes for a restful Easter break and I look forward to reporting to you reporting to you in the summer term, when hopefully a little more normality has returned to our lives.

*Elizabeth Baker.*

Elizabeth Baker  
Chair of Governors



## Diary Reminders

### All Years:

Friday 2<sup>nd</sup> April – Friday 16<sup>th</sup> April – Easter Holidays

### Year 7:

Friday 21<sup>st</sup> May – Full reports to parents

Thursday 27<sup>th</sup> May – Parents' Evening - Virtual

### Year 8:

Friday 7<sup>th</sup> May – Full reports to parents

Thursday 13<sup>th</sup> May – Parents' Evening - Virtual

### Year 9:

### Year 10:

Thursday 22<sup>nd</sup> April – Apprenticeship support and knowledge for school (ASK) webinar – more details below

### Year 11:

10<sup>th</sup> – 14<sup>th</sup> May – Year 11 Assessments

Thursday 22<sup>nd</sup> April – Apprenticeship support and knowledge for school (ASK) webinar – more details below

## Apprenticeship support & knowledge for schools (ASK)

ASK is a government funded programme designed to give schools free support to develop and transform how students think about apprenticeships. We will be holding a virtual parents information evening (primarily designed for parents and carers of Year 10 and 11 students) which will be a whistle-stop tour of apprenticeships at all levels on **Thursday 22<sup>nd</sup> April at 6-7pm**. If you would like to attend, please email me on: [kmohomed@lighthall.co.uk](mailto:kmohomed@lighthall.co.uk)  
We look forward to seeing you there!



## Lateral Flow Tests

Students must remember to continue doing their Lateral Flow Tests on Wednesdays and Sundays throughout the Easter Break. It is recommended that they complete a test on the Sunday evening before they return to school on Monday 19<sup>th</sup> April. If anyone tests positive, please inform the NHS, book a PCR test and email [attendance@lighthall.co.uk](mailto:attendance@lighthall.co.uk).



## Year 11 Assessments

The attitude and commitment demonstrated by the Year 11 students this week has been exemplary. They have been a real credit to themselves and you. The next assessment week is the w/b 10<sup>th</sup> May. I have placed all revision materials from each subject into TEAMS as before. There is also a copy of the materials on the school website in the curriculum/exams section, titled 'Revision resources'.



The Facebook logo, consisting of the word "facebook" in white lowercase letters on a blue rectangular background.

## Facebook

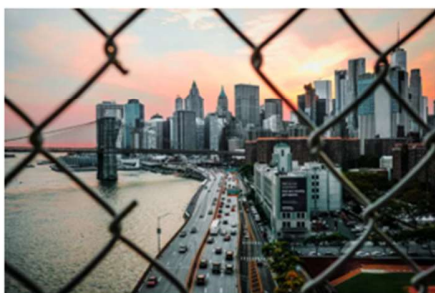
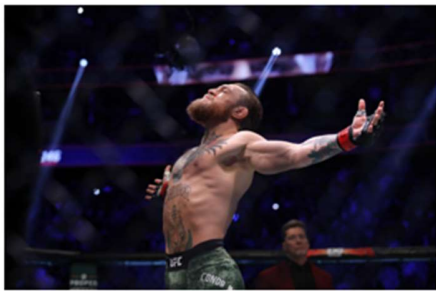
Don't forget to like our Facebook page where you can see snippets of school life and interesting facts, which give you another dimension of what's going on in school.

<https://www.facebook.com/LightHallAcademy>



## Year 9 Writing Competition

# TIME TO WRITE



## Light Hall English

### Year 9 writing competition

In your English lessons in the first week back, your teacher will be setting you a challenge to write a **description** based on one of these three pictures – 150 words maximum.

There will be prizes for **the best entries** and **the people who use the most words from the vocabulary list effectively**.

Deadline - **Monday 17<sup>th</sup> May 2021.**  
More details from your English teacher


## Extra-Curricular Activities

### Light Hall Extra Curricular Spring 2021 – Week 1

Monday	Tuesday	Wednesday	Thursday	Friday
<b>After school</b>		<b>After school</b>	<b>After school</b>	<b>After school</b>
<b>Dodgeball</b> Year 7* Mr Churchill and Mr Nicholls* Gym/Sports Hall Collection room USH 2:40 – 3:40 p.m.		<b>Rounders</b> Year 7* Miss Johnson & Miss Durrant* Field Collection room USH 2:40 – 3:40 p.m.	<b>Cricket</b> Year 7* Mr Williams* Astro Collection Room USH 2:40 – 3:40 p.m.	<b>Ukulele</b> Year 8* Mr Hackett* MR1 Collection room G04 3:00 – 3:40 p.m.
<b>Hockey</b> Year 8* Mr Cleland & Miss Durrant* Astro Collection room G03 Kit: shin pads, gum shield 2:45 – 3:45 p.m.		<b>Softball</b> Year 9* Mr Churchill* Field Collection room D2 2:50 – 3:50 p.m.	<b>Rounders</b> Year 8* Miss Durrant* Field Collection room G03 2:45 – 3:45 p.m.	<b>Band</b> Year 11* Mr Homer* MR2 Collection room – canopy on playground 3:00 – 3:40 p.m.
<b>Rounders</b> Year 10* Mrs Burnham* Field Collection room LSH 2:50 – 3:50 p.m.		<b>Dodgeball</b> Year 8* Mr Nicholls* Gym Collection room G04 2:45 – 3:45 p.m.	<b>Cricket</b> Year 8* Mr Nicholls* Astro Collection room G04 2:45 – 3:45 p.m.	
		<b>Rounders</b> Year 9* Mrs Burnham* Field Collection room D1 2:50 – 3:50 p.m.	<b>Dodgeball</b> Year 9* Mrs Burnham* Sports Hall Collection room D3 2:50 – 3:50 p.m.	
			<b>Dodgeball</b> Year 10* Mr Churchill* Gym Collection room LSH 2:50 – 3:50 p.m.	
			<b>Ukulele</b> Year 7* Mr Hackett* MR1 Collection room G04 3:00 – 3:40 p.m.	
			<b>Band</b> Year 10* Mr Homer* MR2 Collection room C14 3:00 – 3:40 p.m.	

Students must sign up to clubs in advance as numbers are limited.  
 All students are to wait in the allocated collection room to be escorted to the club location.  
 Students attending PE clubs need to arrive in the appropriate PE kit.

Key Music PE




### Light Hall Extra Curricular Spring 2021 – Week 2

Monday	Tuesday	Wednesday	Thursday	Friday
<b>After school</b>		<b>After school</b>	<b>After school</b>	<b>After school</b>
<b>Dodgeball</b> Year 7* Mr Churchill and Mr Nicholls* Gym/Sports Hall Collection room G01 & G02 2:40 – 3:40 p.m.		<b>Rounders</b> Year 7* Miss Johnson & Miss Durrant* Field Collection room 101 2:40 – 3:40 p.m.	<b>Cricket</b> Year 7* Mr Williams* Astro Collection Room G02 2:40 – 3:40 p.m.	<b>Music Tech</b> Year 7* Mr Hackett & Mr Homer* MR2 Collection room C3 3:00 – 3:40 p.m.
<b>Hockey</b> Year 8* Mr Cleland & Miss Durrant* Astro Collection room USH Kit: shin pads, gum shield 2:45 – 3:45 p.m.		<b>Softball</b> Year 9* Mr Churchill* Field Collection room D2 2:50 – 3:50 p.m.	<b>Rounders</b> Year 8* Miss Durrant* Field Collection room G03 2:45 – 3:45 p.m.	
<b>Rounders</b> Year 10* Mrs Burnham* Field Collection room LSH 2:50 – 3:50 p.m.		<b>Dodgeball</b> Year 8* Mr Nicholls* Gym Collection room G04 2:45 – 3:45 p.m.	<b>Cricket</b> Year 8* Mr Nicholls* Astro Collection room G04 2:45 – 3:45 p.m.	
		<b>Rounders</b> Year 9* Mrs Burnham* Field Collection room D1 2:50 – 3:50 p.m.	<b>Dodgeball</b> Year 9* Mrs Burnham* Sports Hall Collection room D3 2:50 – 3:50 p.m.	
			<b>Dodgeball</b> Year 10* Mr Churchill* Gym Collection room LSH 2:50 – 3:50 p.m.	
			<b>Music Tech</b> Year 9* Mr Hackett & Mr Homer* MR2 Collection room C3 3:00 – 3:40 p.m.	

Students must sign up to clubs in advance as numbers are limited.  
 All students are to wait in the allocated collection room to be escorted to the club location.  
 Students attending PE clubs need to arrive in the appropriate PE kit.

Key Music PE



## Thought of the Week

### The meaning of Easter

Easter Sunday – 4<sup>th</sup> April

What is Easter?

In the Christian faith, Easter is the celebration of the resurrection of Jesus from the tomb on the third day after his crucifixion. For Christians, Easter is the fulfilled prophecy of the Messiah who would be persecuted, die for our sins, and rise on the third day. Remembering the resurrection of Jesus is a way to renew daily hope that we have victory over sin.



What does Easter mean?

A recent and complex explanation comes from the Christian background of Easter. The early Latin name for the week of Easter was *hebdomada alba* or “white week,” while the Sunday after Easter day was called *dominica in albis* from the white robes of those who had been newly baptised. The word *alba* is Latin both for *white* and *dawn*. People speaking Old High German made a mistake in their translation and used a plural word for *dawn*, *ostarun*, instead of a plural for white. From *ostarun* we get the German *Ostern* and the English *Easter*.

How is Easter celebrated?

The week leading up to Easter Sunday is often called Holy Week and Christians focus deeply on their faith in this time.

It begins with Palm Sunday. Services on this day, seven days before Easter, recall Jesus entering Jerusalem triumphantly, cheered by crowds as he rode a donkey. Palm leaves were waved on that occasion, and are still significant in church worship, often twisted into the shape of a cross.

Four days later is Maundy Thursday, when Jesus’ followers remember that on the night before he died he asked them to remember him by eating bread and drinking wine. Maundy comes from the Latin word for commandment, recalling Jesus’ command that day that Christians should love each other in the same way that he loves them.

The next day is Good Friday (called Holy Friday in countries with large numbers of Roman Catholic Christians). This is the most solemn day of the Christian year because it is used to recall the appalling death of Jesus. Although it is a public holiday it is increasingly difficult to distinguish it from other days of the year, so many churches hold processions or open air services in public places to draw attention to its significance. Inside churches there are meditative services in a bare setting. It may be that the day was originally known as God Friday, and the name changed as language developed. Elsewhere in the world it is called Great Friday or Holy Friday.

Easter Sunday recalls the day when Jesus’ followers discovered that his tomb was empty. It is the most important and joyful day of the Christian year. Jubilant music is performed, and flowers and banners fill the churches with colour.

Key questions:

1. How do you celebrate Easter?
2. Do you know why the bunny and eggs are associated with Easter?

## Uniform Policy

As many of you will be looking to replace items of uniform over the holiday, just a quick reminder of our uniform policy. As far as we are aware our suppliers will be open from 12<sup>th</sup> April, with COVID restrictions in place. However, all suppliers are also working online. See below for the links.

[www.earlyyearsschoolwear.com](http://www.earlyyearsschoolwear.com) [www.clivemark.co.uk](http://www.clivemark.co.uk)

### UNIFORM POLICY



Our uniform bears our logo, which represents our core values. Our uniform should be worn with pride. Students are expected to adhere to the uniform rules and present themselves smartly every day as they would in the world of work.

#### SHOES

We do appreciate that shoes can be an expensive item for parents to buy and we are therefore keen to ensure the correct version is purchased. Your child may tell you differently. Trainer type shoes are not permitted, nor are canvas pumps, trainers or mules. There should be no added "bling" in the form of glittery stones and studs. Shoes should be flat or with a minimal heel, sensible plain style. Black, clean and polished.

Below are examples of shoes the school deems unacceptable.



#### JEWELLERY & PIERCINGS

A watch for telling the time and one small plain metal stud in each pierced ear lobe are permitted. These must be removed for safety reasons during PE lessons.

No large earrings, glass studs or stretchers.

Only one plain stud per ear lobe is permitted for pupils with pierced ears. No other body piercings are allowed, or piercings covered with plasters.

If your child is going to have their ears pierced please ensure this takes place at the beginning of the six week holiday so that pupils are able to remove earrings if requested without still undergoing the "settling in" period.

#### MAKE-UP, NAIL VARNISH & FALSE EYE LASHES

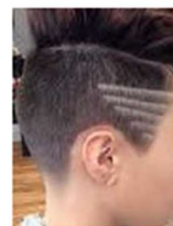
Make-up is inappropriate with school uniform and should not be worn.

No nail varnish or false nails to be worn.

False eye lashes are unacceptable due to Health & Safety concerns.

#### HAIRCUTS & ACCESSORIES

Conventional hairstyle/colour. No coloured hair/stripes shaved in. Hair not be shorter than a 'No. 2'. cut. Hair accessories must be functional, small and black.



## LIGHT HALL UNIFORM (BOYS & GIRLS)

- Black Blazer with Badge
- Black Trousers (conventional width – no tight fitting trousers)
- Black Pleated School Skirt (supplied by either Early Years, Clive Mark or Concept school wear) with pre-embroidered tree on the hemline. The hemline must be on the knee
- Black Straight Skirt supplied by either Early Years, Clive Mark or Concept school wear) with pre-embroidered tree on the hemline or alternatively a black straight skirt can be purchased from a high street store and a badge purchased from school to be sewn onto the hemline (front left). This hemline must be on the knee. The skirt fabric must not be stretch, tube, knitted, leather or faux leather
- Black Socks/Tights. We recommend that tights are worn with skirts.
- White Collared Shirt
- School House Tie – Clip-on
- Black formal shoes (no pumps or trainer style)
- Plain black V neck sweater (to ensure that tie can be seen). No hoodies, sweatshirts or logos.
- Appropriate outdoor coat (no denim, no logos, no hoodies, no sportswear, no leather)
- Headscarves to be plain black only

## SPORTSWEAR (BOYS & GIRLS)

- Light Hall Polo Shirt with Light Hall Badge
- Black Shorts with Light Hall Badge or Light Hall Skort
- Universal Sports Top with Light Hall Badge
- Shin Pads
- Black Football Socks
- Trainers
- Gum Shield (advisable for hockey and rugby)
- Football Boots (required for football or rugby)

## OPTIONAL

School Base Layer – black

School Track Suit bottoms - from approved supplier with logo. *(During the Covid crisis, on the days they have PE, students may wear plain black track suit bottoms. No leggings or coloured track suit bottoms.)*

*All students uniform should be clearly named.*

*All students should have an appropriate school bag, suitable to carry a day's books and their pencil case.*





## WHY NOT BOOK A SLOT TO TAKE ADVANTAGE OF OUR EXPERT FITTING ADVICE?



From their very first crawling shoes to robust and stylish school shoes or shoes for those big weekend adventures, our kids in-store fitting experts will help you find the perfect fit for their growing feet. Plus, we have a personal shopping and fitting service for adults, too.

With hundreds of Clarks stores to choose from, skip the queues and book a 15-minute measure and fit appointment at a time that suits you.



Clarks combine almost 200 years of expert shoemaking with everything they know about caring for growing feet to provide unbeatable all-day comfort. Their shoes pass up to 60 tough tests, from flexing leather 500,000 times to pulling laces to destruction. The result?

The best shoes ever, keeping little feet happy all day long.

To book your in-store fitting appointment visit [www.clarks.co.uk](http://www.clarks.co.uk) or contact your local store

## IN-STORE FITTING

Avoid the queues and book your in-store measure and fit appointment online now at [www.clarks.co.uk](http://www.clarks.co.uk)

Choose Clarks Solihull and a time slot that suits you.

Plus, take along your child's most recent pair of Clarks shoes, and they'll check if they're still a good fit.

## QUIET IN STORE FITTING?

Shoe shopping can be overwhelming for some children. If you think a shopping experience without crowds, noise and bright lights would be better, then book a Quiet Time appointment.

To do this, contact Clarks Solihull on 0121 705 0274

Or call the Customer Care team on 01458 899053

Opening hours, Monday to Saturday 9:00am-6:00pm,  
Sunday 10:00am-5:00pm

Clarks®

