



The Word

THE BEST FROM EVERYONE, ALL OF THE TIME

21ST JANUARY 2022

Headteacher's Roundup

Welcome to the weekend! Our students have been really great this week, coping with the cold weather. They have remained optimistic and happy. However, it has been a week of "all change" again. As you will have seen reported on the news, earlier in the week, face coverings are no longer required in classrooms. This makes communication and learning a little easier! Students may however, continue to wear a face covering in the classroom, if they wish to. At present face coverings are required in corridors and communal spaces. We are pleased to report that COVID cases are currently reducing day on day, in both staff and students. We hope the trend continues.

We are also very aware that COVID has not gone away and we will continue to maintain our protective

measures in school to help mitigate the risk of further transmission.

It has been a very successful week for our sporting teams, with wins in both netball and basketball. I was delighted to have the opportunity to see our under 15 basketball team in action against Park Hall last night. One word comes to mind – amazing! We are so proud of the team. In their current form, we fully expect a lot more good results to be shared. Well done to all our sports men and women and a massive thank you to our PE staff who take the time to train them.

Congratulations and very well done to the following students who have been to see me to sign the Golden Book this week; Millie Y, Jamie Leigh J, Thomas V and Matthew F. All have made an outstanding contribution to Music.

My best wishes for a peaceful weekend.

Annette Kambin

Word of the Week

EXAMINE

Verb: To look at something carefully in order to find out about it or see what it is like.

The class **examined** the timeline that took them through the main events preceding, during and following the Holocaust.

House Points Totals

The running totals for number of house points so far are:

			
22232	21112	21977	23107

Diary Reminders

All Years:

Tuesday 25th and Wednesday 26th January – Flu Vaccinations
Wednesday 2nd February – INSET Day
Thursday 3rd February and Friday 4th February – COVID Vaccinations
Monday 21st February – Friday 25th February – HALF TERM

Year 7:

Monday 31st January – Year 7 Netball (H) v St Peters
Tuesday 8th February – Year 8 PSHEC Day

Year 8:

Thursday 25th January – Year 8 Basketball Playoffs Round 2 – opposition and venue TBC
Wednesday 26th January – Year 8 Netball (A) v Grace Academy
Monday 7th February - Year 8 PSHEC Day

Year 9:

Wednesday 26th January – Year 9 Netball (A) v Grace Academy
Thursday 27th January – Year 9 Basketball (A) v Alderbrook – 5.15pm return
Monday 31st January – Friday 4th February – Year 9 mid-year exams
Friday 11th February – Year 9 PSHEC Day

Year 10:

Thursday 27th January – Year 10 Basketball (A) v Alderbrook – 5.15pm return
Thursday 10th February – Year 10 Parents' Evening
Thursday 3rd February – Year 10 PSHEC Day

Year 11:

Thursday 10th February – Year 11 PSHEC Day

Year 10 Parents' Evening

The booking system for Year 10 parents' evening on Thursday 10th February is now open. If you have any queries, please contact kregan@lighthall.co.uk.



Thought of the week

How can we save the planet?

Veganuary Month January

Eating a vegan diet is an option for some people who are interested in reducing the environmental impact on earth. So what does the research suggest about veganism?

Researchers at the University of Oxford found that cutting meat and dairy products from your diet could reduce an individual's carbon footprint from food by up to 73 per cent.



If everyone stopped eating these foods, they found that global farmland use could be reduced by 75 per cent, an area equivalent to the size of the US, China, Australia and the EU combined.

Not only would this result in a significant drop in greenhouse gas emissions, it would also free up wild land lost to agriculture, one of the primary causes for mass wildlife extinction.

The new study, published in the journal Science, is one of the most comprehensive analyses to date; looking into the detrimental effects farming can have on the environment and included data on nearly 40,000 farms in 119 countries.

The findings reveal that meat and dairy production is responsible for 60 per cent of agriculture's greenhouse gas emissions, while the products themselves providing just 18 per cent of calories and 37 per cent of protein levels around the world.

However, diet choices are just one way to help the environment – there are many other ways out there that we can contribute to lowering our carbon foot print.

House Music Competition

Well done to all students for competing in the house music competition last week. Students had the task of composing an original piece! Winners are...

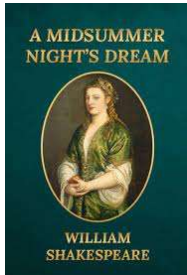
Joe, Isaac, Will and Billy. This was a sequenced composition that reflected in its sections the patterns of lockdown and release throughout the last two years. Each section reflected the darkness of the restriction in lockdown followed by the excitement of coming back to school and a new normal.

Kai and Matthew: This was an original duet for two acoustic guitars. It used repetitive patterns to represent the repetitive nature of lockdown days with a small range of notes representing the limits on what everyone was allowed to do. A soulful melody added by Kai using the minor mode had a feeling of sadness reflecting being away from friends.

Oscar S: Oscar produced a sequenced sound montage which reflected the stress and strain of the lockdown period. Other worldly sounds and use of dissonance created an emotional outcry, a musical equivalent of Edvard Munch's "The Scream".

Netball

Congratulations to the year 10 and 7 netball teams - they successfully won their matches against Tudor Grange this week. Year 10 had a strong start and held off to win 5-3 - Megan J was outstanding and year 7 player of the match, Amelia, led the team to win 7-2!



School Production

Auditions for the school production a Midsummer Night's Dream are on THURSDAY 27th JANUARY – 3.00-5.30pm. Please make sure your child is aware of their timeslot as they only need to stay for their audition, they can go home once auditioned.

Please feel free to contact us if you wish to confirm audition times, so they can be collected safely from school.

Miss Brown – vbrown@lighthall.co.uk & Ms Wyatt ewyatt@lighthall.co.uk

Class Charts

We are moving all of our communication to this one platform, in particular attendance, by the end of January 2022.

The school moved to a software package called "Class charts" in September 2021.

The feedback from all users: parents, students and staff, has been extremely positive.

It is the main method of reporting all behaviours (positive and negative), homework, sanctions and a way of getting notifications and information to students and parents quickly.

We also use it to track attendance, report and inform about attendance.

Parents / carers have been provided with a number of reminders of how to log into their child's account, and provided with the specific log in code. Pastoral staff are now contacting families direct to support any issues with logging in.

You can use one parental log in, if you have more than one child at school, although you do have to add the names of your children to your log in to see their school details.

It is vital that parents / carers move to this system to ensure that all information can be shared about their child. From February any absences will only be communicated through class charts.

Use the link to the parents / cares guide.

https://pages.classcharts.com/wp-content/uploads/Class_Charts_for_parents_guide.pdf



Year 9 Assessment Timetable

English		Maths		Science		Drama		Geography		History		IT	
H1	Tues 01.02 P2	H1	Mon 31.01 P5	HS	Tues 01.02 P1	H1	Tue 01.02 P3	H1	Fri 04.02 P5	H1	Mon 31.01 P3	H1	Fri 04.02 P3
H2	Mon 31.01 P4	H2	Mon 31.01 P5	HC	Tues 01.02 P1	H2	Fri 04.02 P4	H2	Fri 04.02 P5	H2	Tues 01.02 P2	H2	Mon 31.01 P1
HE	Mon 31.01 P1	H3	Mon 31.01 P5	HI	Tues 01.02 P1	HE	Tue 01.02 P2	HE	Fri 04.02 P3	HE	Mon 31.01 P3	HE	Fri 28.01 P5
HN	Mon 31.01 P1	H4	Mon 31.01 P5	HE	Tues 01.02 P1	HN	Wed 26.01 P5	HN	Mon 31.01 P3	HN	Mon 31.01 P4	HN	Fri 04.02 P3
HG	Mon 31.01 P1	H5	Mon 31.01 P5	HN	Tues 01.02 P1	HG	Fri 04.02 P3	HG	Fri 04.02 P5	HG	Fri 04.02 P4	HG	Mon 31.01 P4
L1	Mon 31.01 P2	L1	Mon 31.01 P4	LS	Tues 01.02 P5	L1	Thur 03.02 P2	L1	Tues 01.02 P4	L1	Mon 31.01 P1	L1	Mon 07.02 P4
L2	Mon 31.01 P1	L2	Mon 31.01 P4	LC	Tues 01.02 P5	L2	Thur 27.01 P3	L2	Mon 31.01 P2	L2	Tues 01.02 P4	L2	Mon 07.02 P4
LE	Mon 31.01 P1	L3	Mon 31.01 P4	LI	Tues 01.02 P5	LE	Mon 31.01 P2	LE	Fri 04.02 P1	LE	Thurs 03.02 P2	LE	Fri 28.01 P4
LN	Tues 01.02 P1	L4	Mon 31.01 P4	LE	Tues 01.02 P5	LN	Fri 28.01 P2	LN	Fri 04.02 P2	LN	Mon 31.01 P4	LN	Mon 31.01 P2
LG	Mon 31.01 P2	L5	Mon 31.01 P4	LN	Tues 01.02 P5	LG	Tue 01.02 P4	LG	Fri 04.02 P2	LG	Mon 31.01 P3	LG	Fri 28.01 P4
L&M		Music		French		Spanish		A&D		Design Tech			
H1	Mon 31.01 P3	H1	Mon 31.01 P1	H1	Thur 03.01 P3 Fri 04.02 P2	H1	Thur 03.01 P3 Fri 04.02 P2	H1	Thurs 27.01 P3	H1	Mon 31.01 P2		
H2	Tues 25.01 P2	H2	Fri 04.02 P3	H2	Thur 03.01 P3 Fri 04.02 P2	H2	Thur 03.01 P3 Fri 04.02 P2	H2	Thurs 27.01 P3	H2	Mon 31.01 P2		
HE	Fri 04.02 P5	HE	Mon 31.01 P4	H3	Thur 03.01 P3 Fri 04.02 P2			H3	Thurs 27.01 P3	H3	Mon 31.01 P2		
HN	Fri 04.02 P5	HN	Thur 27.01 P2					I1	Mon 31.01 P2	I1	Wed 02.02 P5		
HG	Tues 01.02 P3	HG	Thur 03.01 P5					I2	Mon 31.01 P2	I2	Wed 02.02 P5		
L1	Mon 31.01 P3	L1	Mon 24.01 P5	L1	Tue 01.02 P3 Fri 04.02 P3	L1	Tue 01.02 P3 Fri 04.02 P3	I3	Mon 31.01 P2	I3	Wed 02.02 P5		
L2	Mon 31.01 P2	L2	Thur 03.02 P4	L2	Tue 01.02 P3 Fri 04.02 P3	L2	Tue 01.02 P3 Fri 04.02 P3	L1	Thur 03.02 P3	L1	Mon 31.01 P5		
LE	Tues 01.02 P4	LE	Mon 31.01 P3			L3	Tue 01/02 P.3 Fri 04/02 P.3	L2	Thur 03.02 P3	L2	Mon 31.01 P5		
LN	Mon 31.01 P1	LN	Mon 24.01 P4					L3	Thur 03.02 P3	L3	Mon 31.01 P5		
LG	Thurs 03.02 P2	LG	Tues 01.02 P1					M1	Mon 31.01 P5	M1	Thurs 03.02 P3		
								M2	Mon 31.01 P5	M2	Thurs 03.02 P3		
								M3	Mon 31.01 P5	M3	Thurs 03.02 P3		

