



# The Word

THE BEST FROM EVERYONE, ALL OF THE TIME

16<sup>TH</sup> DECEMBER 2022

## Headteacher's Roundup

Merry Christmas and a happy holiday to you all! As we come to the end of another term I just wanted to congratulate, and thank, all our students for their hard work and immense resilience. Despite the bitterly cold weather these past few weeks our students have coped admirably.

This week, as part of our PHSEC curriculum students in years 9, 10 and 11 have had assemblies from Loudmouth, highlighting the issues and challenges facing our young people, and arming them with the knowledge to overcome these.

This week has been all about talent! Firstly, we've had "Light Hall's Got Talent" and I'm happy to say no-one received three Xs from our judges! A huge well done to Renee S our finalist.

To round off the week, and to get us in the festive spirit, the Christmas concert was fabulous. I was so impressed with our musicians and drama students. Thank you to everyone who took part and to all staff who supported this wonder magical event.

I am sure you will join me in thanking all our staff for their dedication and hard work this term, and my heartfelt thanks to you, the parents and carers, for your continued support. I hope that everyone manages to get some sort of rest and relaxation over the break.

Finally, please stay safe and warm this Christmas and I look forward to seeing all of our Light Hall family on 3<sup>rd</sup> January. #TeamLightHall

Best wishes

*Annette Kumbler*

## Word of the Week

### REFLECTION

Noun: The image of something in a mirror or on any reflective surface.

They saw the **reflections** of the clouds on the lake.

Consideration of some subject matter, idea, or purpose.

After careful **reflection**, I decided to take a year off from college.

## House Points Totals

The running totals for number of house points so far are:

			
<b>23233</b>	<b>21522</b>	<b>22909</b>	<b>21455</b>

## Diary Reminders

### All Years:

Tuesday 3<sup>rd</sup> January – Term starts

### Year 7:

Thursday 19<sup>th</sup> January – Year 7 Flu Nasal Spray

### Year 8:

Thursday 19<sup>th</sup> January – Year 8 Flu Nasal Spray

### Year 9:

Monday 16<sup>th</sup> January – Friday 13<sup>th</sup> January – Year 9 Assessment Week

Wednesday 18<sup>th</sup> January – Year 9 HPV 2<sup>nd</sup> Dose

Thursday 19<sup>th</sup> January – Year 9 HPV 2<sup>nd</sup> Dose

Thursday 19<sup>th</sup> January – Year 9 Flu Nasal Spray

### Year 10:

Thursday 12<sup>th</sup> January – Year 10 Netball v John Henry Newman (A)

Thursday 19<sup>th</sup> January – Year 10 Netball v John Henry Newman (A)

### Year 11:

Wednesday 11<sup>th</sup> January – Year 11 Photographs

Friday 13<sup>th</sup> January – Year 11 Mock Certificates

## Thought of the week

### Christmas - 25th December

It's that time of year again. December has come and with it all the joys of Christmas. But what is the real meaning of Christmas? Is it the gifts under the tree, the lights in the windows, the cards in the mail, turkey dinners with family and friends, snow in the garden, stockings hanging in the living room, and shouts of "Merry Christmas" to those who pass us in the streets? Is this really Christmas?

Christmas can be a season of great joy. For Christians, it is a time when they celebrate the birth of Jesus Christ. Christians believe that God sent His Son, Jesus, into the world to be born. His birth brought great joy to the world.



Shepherds, wise men, and angels all shared in the excitement of knowing about this great event.

No matter what your religion or faith is, Christmas is a time for sharing, for families and friends, and to reflect on all of the things in life you are grateful for.

Key Questions:

1. How can you show kindness to people this Christmastime?
2. What things do you feel grateful for?
3. Does it matter whether you are religious to understand the spirit of Christmas?

## Year 9 Assessment Schedule January 2023

English		Maths		Science		Geography	
H1	Monday 9th P1	H1	Friday 13th P1	HS	Tuesday 10th P5	H1	Thursday 12th P1
H2	Monday 9th P2	H2	Friday 13th P1	HC	Tuesday 10th P5	H2	Thursday 12th P3
HE	Monday 9th P1	H3	Friday 13th P1	HI	Tuesday 10th P5	HE	Friday 13th P4
HN	Monday 9th P2	H4	Friday 13th P1	HE	Tuesday 10th P5	HN	Thursday 12th P3
HG	Monday 9th P1	H5	Friday 13th P1	HN	Tuesday 10th P5	HG	Tuesday 10th P1
L1	Monday 9th P5	L1	Friday 13th P5	LS	Tuesday 10th P1	L1	Friday 13th P2
L2	Monday 9th P5	L2	Friday 13th P5	LC	Tuesday 10th P1	L2	Thursday 12th P4
LE	Monday 9th P5	L3	Friday 13th P5	LI	Tuesday 10th P1	LE	Friday 13th P2
LN	Monday 9th P5	L4	Friday 13th P5	LE	Tuesday 10th P1	LN	Friday 13th P2
LG	Monday 9th P5	L5	Friday 13th P5	LN	Tuesday 10th P1	LG	Friday 13th P3

History		Life & Morality		IT	
H1	Friday 13th P4	H1	Tuesday 10th P1	H1	Monday 9th P4
H2	Monday 9th P4	H2	Monday 9th P1	H2	Friday 14th P5
HE	Thursday 12th P3	HE	Monday 9 <sup>th</sup> P2	HE	Friday 14th P5
HN	Friday 13th P5	HN	Monday 9th P4	HN	Tuesday 10th P2
HG	Friday 13th P2	HG	Tuesday 10th P4	HG	Monday 9th P4
L1	Wednesday 11th P1	L1	Friday 13th P3	L1	Monday 9th P2
L2	Friday 13th P3	L2	Monday 9th P3	L2	Friday 14th P1
LE	Tuesday 10th P4	LE	Wednesday 11th P1	LE	Monday 9th P2
LN	Friday 13th P3	LN	Friday 6th P2	LN	Monday 9th P2
LG	Tuesday 10th P4	LG	Monday 9th P3	LG	Monday 9th P2

Drama		Music		French		Spanish	
H1	Thursday 12th P2	H1	Friday 13th P3	H1	Writing Tuesday 10th P3 and List and Read Wed 11th p2	H1	Writing Wednesday 11th P2 and List and read Thursday 12th P2
H2	Thursday 12th P2	H2	Wednesday 11th P2	H2	Writing Tuesday 10th P5 and List and Read Friday 13th P1	H2	Writing Tuesday 10th P3 and listening and reading Friday 13th P3
H3	Tuesday 10th P3	H3	Friday 13th P3			H3	Writing Tuesday 10th P3/ List and Read Wednesday 11th P2
H4	Wednesday 11th P2	H4	Thursday 12th P2				
H5	Friday 13th P3	H5	Thursday 12th P2				
L1	Wednesday 11th P5	L1	Monday 9th P4	L1	Writing Wednesday 11th P3 and L&R Thursday P5	L1	Writing Wednesday 11th P5 and L&R Thursday 12th P5
L2	Thursday 12th P5	L2	Wednesday 11th P3	L2	Writing Monday 09th P4 and L&R Wednesday 11th P5	L2	Writing Wednesday 11th P3 and L&R Thursday P5
L3	Monday 9th P4	L3	Wednesday 11th P5	L3	Writing Wednesday 11th P3 and L&R Thursday P5		
L4	Wednesday 11th P3	L4	Monday 9th P4				
L5	Monday 9th P4	L5	Wednesday 11th P5				

## MFL Christmas Poster Competition

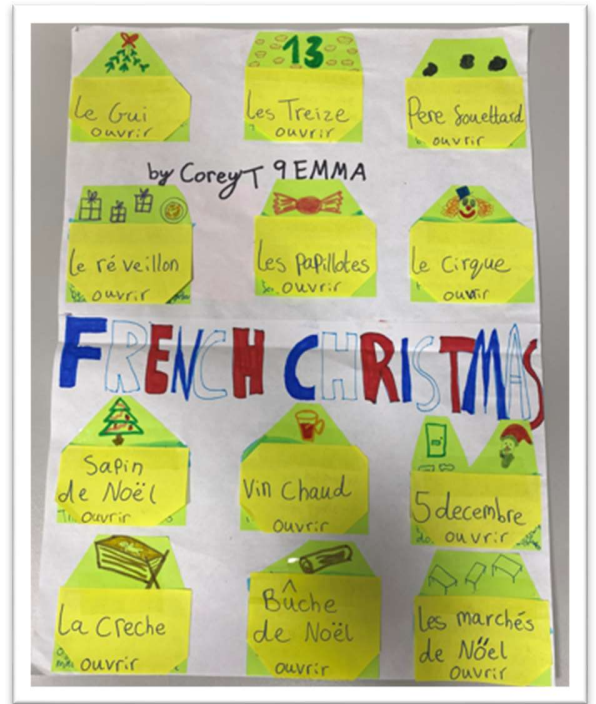
Congratulations to the winners of the Modern Foreign Language Christmas Poster Competition. There were so many great entries.



1<sup>st</sup> Prize – Joshua H Year 8



2<sup>nd</sup> Prize - Corey T Year 9



3<sup>rd</sup> Prize - Ben T Year 7



## Reporting Student Absence

If your child is unable to attend school, you are required to contact us as soon as possible.

This can be done by any one of the following methods:

- Class Charts
- SIMS 'in touch' message
- Telephone
- Email
- Via our website

If you do not contact school, your child's attendance will be recorded as unauthorised, as per our attendance policy which can be found on our website.

Students who have ten or more 'O' (unauthorised) or 'G' (holiday) codes for attendance will be referred to the local authority, who will consider issuing a fixed penalty notice (FPN).

It is important to note that every day in school consists of two sessions. Therefore, ten absences equates to five school days.

Statistics show that students who attend school regularly and have over 95% attendance are more likely to achieve or exceed their expected progress targets.

## National Apprenticeships Week



Once again, the ASK Programme are hosting a series of free events during National Apprenticeship Week, please see below for a list of our event and a link to Eventbrite to register; our events are for Students, Parent/Carers and Teachers, feel free to share.

### **Monday 6<sup>th</sup> February – Launch Day**

**16:30-17:00 “Welcome to the World of Apprenticeships”**

Eventbrite Link - <https://www.eventbrite.co.uk/e/welcome-to-the-world-of-apprenticeships-1630pm-tickets-482331956867>

**18:00-18:30 – “Welcome to the World of Apprenticeships”**

Eventbrite link - <https://www.eventbrite.co.uk/e/welcome-to-the-world-of-apprenticeships-6pm-tickets-482974157707>

**19:00-19:30 – “Welcome to the World of Apprenticeships ”**

Eventbrite link - <https://www.eventbrite.co.uk/e/welcome-to-the-world-of-apprenticeships-1900-tickets-483798423107>

### **Thursday 9<sup>th</sup> February – T Levels**

**18:00-18:30 – “Welcome to the world of T-Levels”**

Eventbrite link - <https://www.eventbrite.co.uk/e/welcome-to-the-world-of-t-levels-6pm-tickets-484399340467>

### **Saturday 11<sup>th</sup> February – Parents/Carers Day**

**9:30-10:00 – “Helping parents & carers understand the Apprenticeship pathway”**

Eventbrite link - <https://www.eventbrite.co.uk/e/helping-parents-carers-understand-the-apprenticeship-pathway-tickets-483253061917>

**10:30-11:00 – “A Parents & Carers Guide to understanding Apprenticeships”**

Eventbrite link - <https://www.eventbrite.co.uk/e/a-parent-carers-guide-to-understanding-apprenticeships-tickets-482516739557>

**11:30-12:00 – “A Parents & Carers Guide to understanding Apprenticeships”**

Eventbrite link - <https://www.eventbrite.co.uk/e/a-parent-carers-guide-to-understanding-apprenticeships-tickets-483291707507>

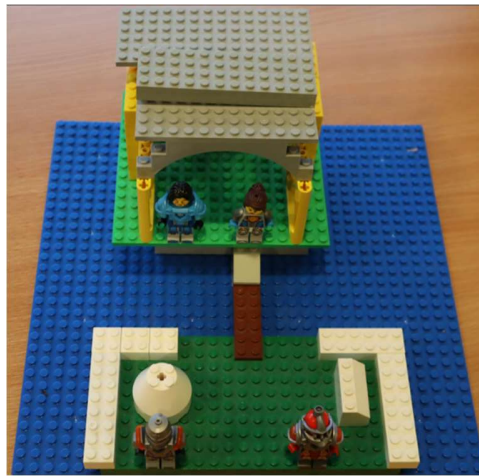
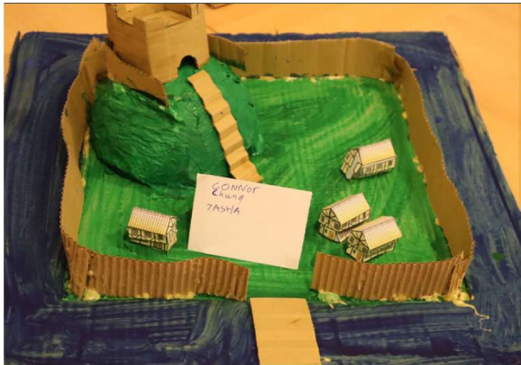
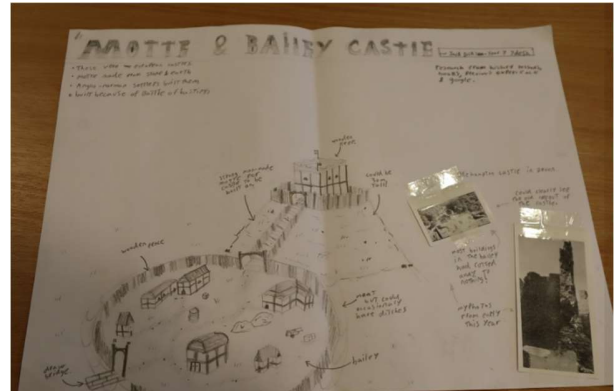
## Battle of the Houses

Students were tasked with designing a Motte and Bailey castle and were marked based on historical accuracy, creativity and overall presentation. We had some great entries! Well done to who all entered, they were all fantastic! Congratulations to the winners.....

Best Castle – Abbie T – Atlantis

Most Accurate – Isaac D and Josh D – Endeavour

Most Creative – Nasr H – Endeavour



# Careers Education at Light Hall



THE BEST FROM EVERYONE, ALL OF THE TIME

AUTUMN 2022

## Year 11 Destinations

This term students in year 11 have been hearing from a range of different post 16 providers. Each Friday from the 10<sup>th</sup> September to the 11<sup>th</sup> November a different post 16 provider has delivered an assembly to the cohort. They have talked students through the wide variety of A-levels, apprenticeships, T-levels and BTecs available at each provider alongside the pastoral and enrichment opportunities available. Remember to get those applications submitted in good time. Some local providers have deadlines in February.



Year 11 have also been learning about the apprenticeship opportunities available to them. On the 18<sup>th</sup> October instead of their normal lessons students had sessions on the variety of post 16 options, logged into Kudos to consider which careers might be most suited to them and had a talk from ask apprenticeships on the different types of apprenticeships and how to access them. Students interested in apprenticeships were encouraged to sign up for alerts on local apprenticeships via the government website <https://www.gov.uk/apply-apprenticeship>. It is worth remembering that apprenticeships are very competitive and it is worth putting an application into college as well.

Y11 have also been having careers interviews with an independent careers advisor. These are still ongoing, the advisor has been very impressed with the plans our year 11 students have.

## Year 10 RAF visit

On Monday 5<sup>th</sup> December Sergeant Andy Chambers paid us a visit. He delivered an assembly to all of year 10 about careers in the RAF and his experiences of a career in the RAF. After break Sergeant put students interested in a career within the armed forces through their paces in a personal development session. It was great to see how well they worked in their teams.



## Life ready program

This half term in form time students have been logging in to the online careers service Kudos and completing tasks about the different types of work and sectors. Next half term students will be studying the labour market – particularly the local labour market in Solihull and Birmingham.



## STEM events

Years 7 and 9 have also been hard at working exploring future careers options. Severn Trent have visited us to talk to year 7's about the water cycle and careers within the sector. Year 9 enjoyed a session from the Smallpiece trust in conjunction with HS2. They designed railway stations, tunnels and practised managing rail networks.

## Tear 10 Work Experience

We are pleased that for the first time in a few years Light Hall will be offering students in year 10 the opportunity to go on work experience between the 10<sup>th</sup> and 14<sup>th</sup> July.



Students and their parents/ guardians need to source their own placement. This can be quite a challenge so if you are able to offer a work experience placement we would love to hear from you so we can point students in your direction. Please email Mrs Hunter with your details. [Chunter@lighthall.co.uk](mailto:Chunter@lighthall.co.uk)

Students unable to source a placement will continue to attend school as normal where they will complete alternative careers linked activities including where possible virtual work experience.

## PSHEC – personal, social, health and economic education

What have we been studying this half term?

- Year 7 – rights and responsibilities, identify and challenging discrimination
- Year 8 – money management, identify and bullying
- Year 9 – diversity and intimate relationships
- Year 10 – diversity and online behaviour





# Uniform Policy

THE BEST FROM EVERYONE, ALL OF THE TIME

REVIEWED MAY 22

Our uniform bears our logo, which represents our core values. Our uniform should be worn with pride. Students are expected to adhere to the uniform rules and present themselves smartly every day as they would in the world of work.

## SHOES

We do appreciate that shoes can be an expensive item for parents to buy and we are therefore keen to ensure the correct version is purchased. Your child may tell you differently. Trainer type shoes are not permitted, nor are canvas pumps, trainers or mules. There should be no added "bling" in the form of glittery stones and studs. Shoes should be flat or with a minimal heel, sensible plain style. Black, clean and polished.

Below are examples of shoes the school deems unacceptable.



## JEWELLERY & PIERCINGS

A watch for telling the time and one small plain metal stud in each pierced ear lobe are permitted. These must be removed for safety reasons during PE lessons.

No large earrings, glass studs or stretchers.

Only one plain stud per ear lobe is permitted for pupils with pierced ears. No other body piercings are allowed, or piercings covered with plasters.

If your child is going to have their ears pierced please ensure this takes place at the beginning of the six week holiday so that pupils are able to remove earrings if requested without still undergoing the "settling in" period.

## MAKE-UP, NAIL VARNISH & FALSE EYE LASHES

Make-up is inappropriate with school uniform and should not be worn.

No nail varnish or false nails to be worn.

False eyes lashes are unacceptable due to Health & Safety concerns.

## HAIRCUTS & ACCESSORIES

Conventional hairstyle/colour. No coloured hair/stripes shaved in. Hair not be shorter than a 'No. 2'. cut. Hair accessories must be functional, small and black.



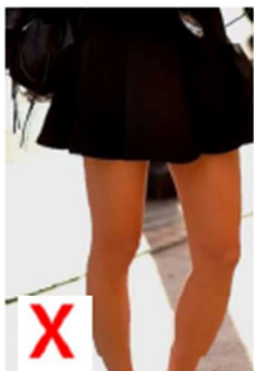
**Uniform suppliers:**

**Monkhouse, Shirley  
Clive Mark, Kings Heath**

**Concept Schoolwear, Hall Green  
Midland Schoolwear, Acocks Green**

## LIGHT HALL UNIFORM (BOYS & GIRLS)

- Black Blazer with Badge
- Black Trousers (conventional width – no tight fitting trousers)
- Black Pleated School Skirt (supplied by approved stockist) with pre-embroidered tree on the hemline. The hemline must be on the knee; or
- Black Straight Skirt supplied by approved stockist with pre-embroidered tree on the hemline; or
- Black straight skirt can be purchased from any high street store and a badge purchased from school to be sewn onto the hemline (front left). This hemline must be on the knee. The skirt fabric must not be stretch, tube, knitted, leather or faux leather
- Black Socks/Tights. We recommend that tights are worn with skirts.
- White Collared Shirt
- School House Tie – Clip-on
- Black formal shoes (no pumps or trainer style)
- Plain black V neck sweater (to ensure that tie can be seen). No hoodies, sweatshirts or logos.
- Appropriate outdoor coat (no denim, no logos, no hoodies, no sportswear, no leather)
- Headscarves to be plain black only



Skirt should be no more than 5 cm above the top of knee



No lycra/tube skirts



No leggings



No skinny or cropped trousers

## SPORTSWEAR (BOYS & GIRLS)

- Light Hall Polo Shirt with Light Hall Badge
- Black Shorts with Light Hall Badge or Light Hall Skort
- Universal Sports Top with Light Hall Badge
- Shin Pads
- Black Football Socks
- Trainers
- Gum Shield (advisable for hockey and rugby)
- Football Boots (required for football or rugby)

## OPTIONAL

- School Base Layer – black
- School Track Suit bottoms - from approved supplier with logo. Strictly no leggings or coloured tracksuit bottoms.