

A-LEVEL PSYCHOLOGY

WHY STUDY PSYCHOLOGY AT A-LEVEL?

Have you ever wondered why people behave in certain ways? Or wanted to understand people better? Well that is the basis of psychology... Psychology is the scientific study of mind and behaviour. Psychology investigates why we behave in the manner we do, helping us understand the human psyche. It also gives us insight into the motivations behind our own actions. A-level psychology offers a solid understanding of the key psychological concepts and theories, which can help you develop your knowledge of the critical elements of human behaviour.

Studying psychology helps to enhance analytical and evaluation skills and is a subject that allows students to have a better understanding of their own behaviour and that of others. The skills that students gain at the end of the course compliment many university degrees (you do not have to study the subject at degree level) and are attractive to prospective employers.

TOPICS STUDIED

TOPIC 1

Introductory topics in Psychology

The study of social influence which considers why people conform and how society can change its viewpoint, memory, which will examine theory and research into how memory works and why we forget. and attachment which investigates the importance of how children develop attachments and the impact this has on later relationships.

TOPIC 2

Psychology in Context

Approaches in Psychology (including Biopsychology) which examines the origins of Psychology as well as assumptions, applications and evaluations of different learning approaches such as biological and psychodynamic.

Biopsychology is the study of biological systems (endocrine, nervous and brain function) and their links to human behaviour.

Psychopathology explores what is considered abnormal and explores the causes and treatments of behaviours such as phobias, depression and OCD.

Research Methods looks at techniques used to design and conduct psychological experiments.

TOPIC 3

Develop understanding of Year 12 topics

Social influence, Memory, Attachment and Psychopathology

Approaches in psychology, research methods, scientific processes, data handling and analysis.

Issues and options in Psychology (compulsory content) – will explore the arguments that surround issues such as gender and culture in psychology.

TOPIC 4

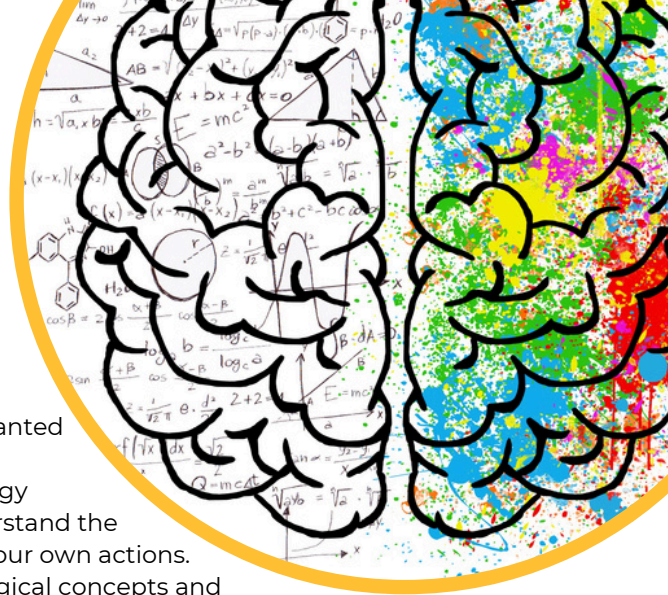
Optional content: One topic from each of the following groups.

- cognition and development
- forensic psychology
- schizophrenia

ASSESSMENT STRUCTURE

The course is assessed via three written papers at the end of Year 13

- Paper 1: Introductory topics in Psychology
- Paper 2: Psychology in context
- Paper 3: Issues and options in Psychology
 - 2 hours each
 - Worth 33.3% of the overall grade each



A-LEVEL PSYCHOLOGY



ENTRY REQUIREMENTS

Grade 6 in GCSE Maths

Grade 6 in GCSE English (Language/Literature)

CAREER PATHWAYS

A-Level Psychology is a course that covers topics and skills that are relevant to many different career options e.g.: social work, research, teaching and journalism.

Studying Psychology gives you a broad range of skills that span both science and the arts and opens up opportunities with a variety of employers ranging from multi-national companies to privately run businesses and work within the health sector. A-level Psychology is recognised as a Science for entry requirements for university.

Examples of jobs that are directly related are:

- Clinical psychologist
- Educational psychologist
- Forensic psychologist
- Teacher
- Advertising
- Occupational psychologist
- Sport and exercise psychologist

IS THIS COURSE FOR ME?

Yes, if you want to learn more about the human mind and how our decisions are shaped by our interactions with those around us. Studying A-Level Psychology can teach you about the ways people interact in social situations. It will explore the fascinating human mind and expand your awareness of why we behave how we do. You will develop an understanding of how memory works and learn techniques that may help you to study more effectively.

A-Level Psychology could be the first step towards an exciting career as it helps you prepare for university study.

Engaging in pre – learning to deepen your understanding of psychology and the biological and mathematical applications of biopsychology and research methods.

NEED MORE INFORMATION?

Please contact Mrs Javed, Leader of Psychology, sjaved@lighthall.co.uk

Exam Board: AQA

READING LIST :

- The Social Animal (Elliot Aronson, Joshua Aronson)
 - Opening Skinner's Box (Lauren Slater)
 - Welcome To Your Brain (Sandra Aamodt, Sam Wang)
 - Breakdown (Stuart Sutherland)
 - The Man Who Mistook His Wife For A Hat (Oliver Sacks)
- 